



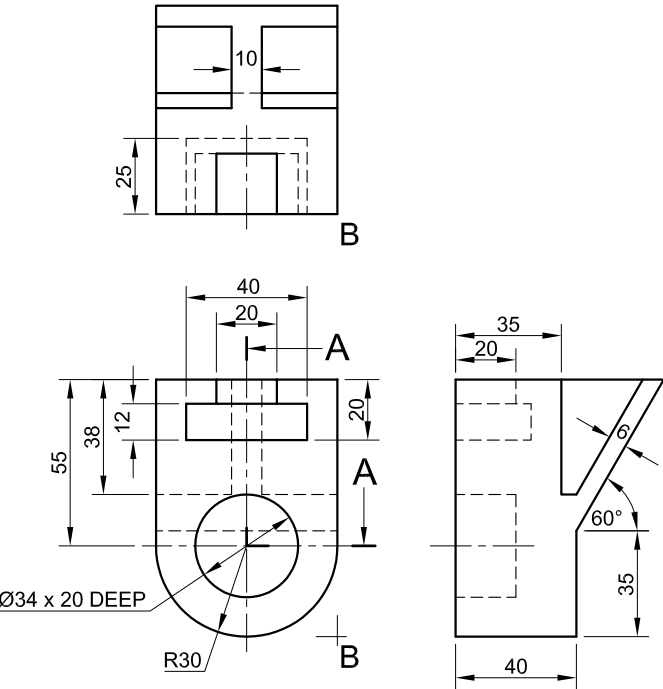
QUESTION 3: ISOMETRIC DRAWING

Given:
The front view, top view and right view of a jig bracket with a cutting plane A-A.
The position of point B on the drawing sheet.

Instructions:
Convert the orthographic views of the jig bracket into a sectional isometric drawing on cutting plane A-A.

- Make corner B the lowest point of the drawing.
- Show ALL necessary construction.
- NO hidden detail is required.

[44]



↓
B

ASSESSMENT CRITERIA				
CONSTR' + AUX + B	8			
ISO' CIRCLES + CNTR LINES	8½			
ISO' + NON-ISO' LINES	12			
SECTIONED SURFACES	10½			
HATCHING	5			
TOTAL	44			
EXAMINATION NUMBER				
EXAMINATION NUMBER				4